

**CHERRY**  
**ORCHARD**  
BASHUNDHARA R/A



[www.actsasset.com](http://www.actsasset.com)



# AT A GLANCE



Single Unit, South-facing Apartments



Built Over 04 Katha



1100/2200 sqft. Apartments



3/4 bedroom Apartments



Number of Floors G+6

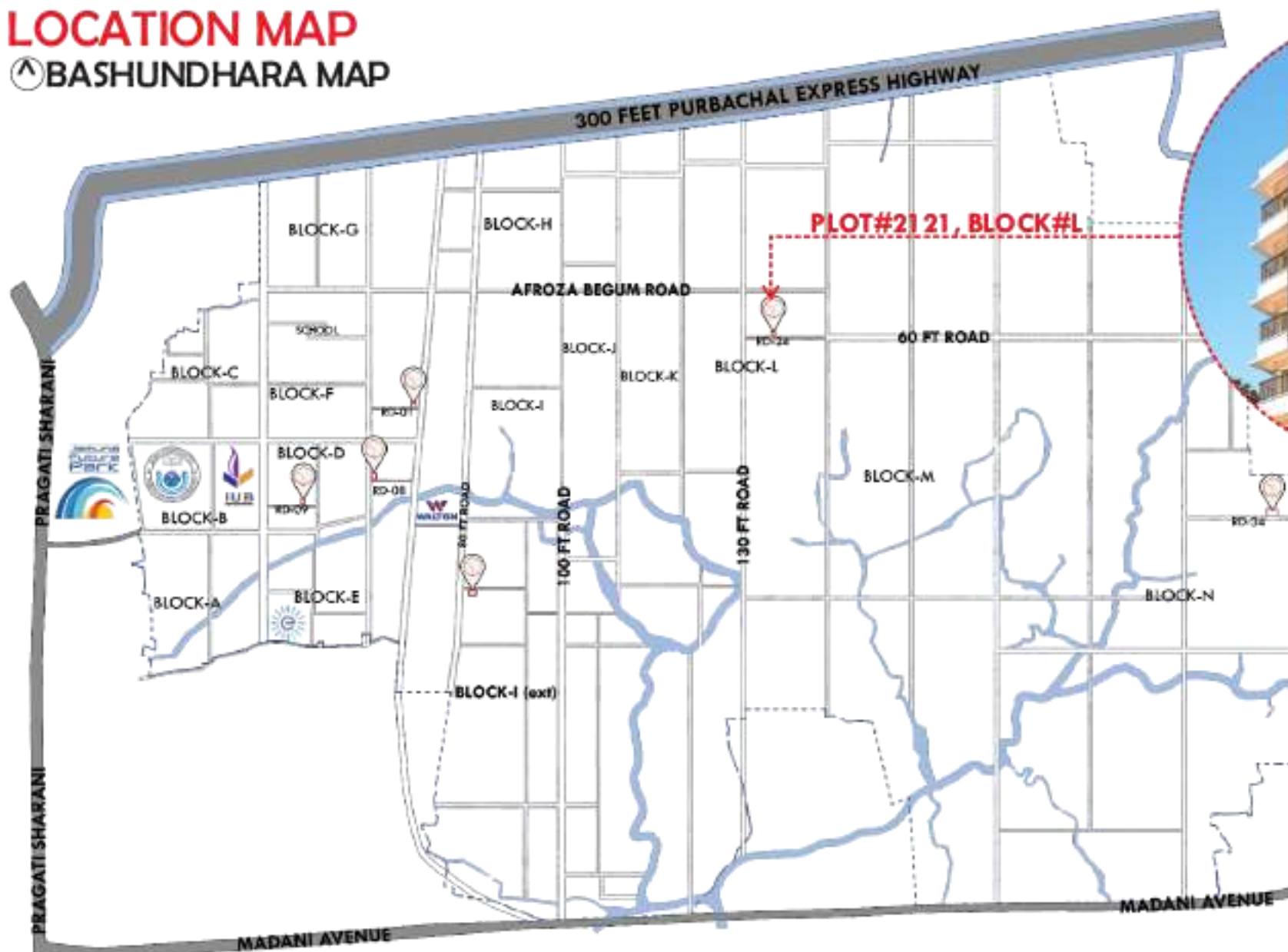


RAJUK Approval no  
25.39.0000.106.33266.22



# LOCATION MAP

⬆️ BASHUNDHARA MAP



*A perfect Harmony of Calmness, Serenity, Convenience at your doorstep*

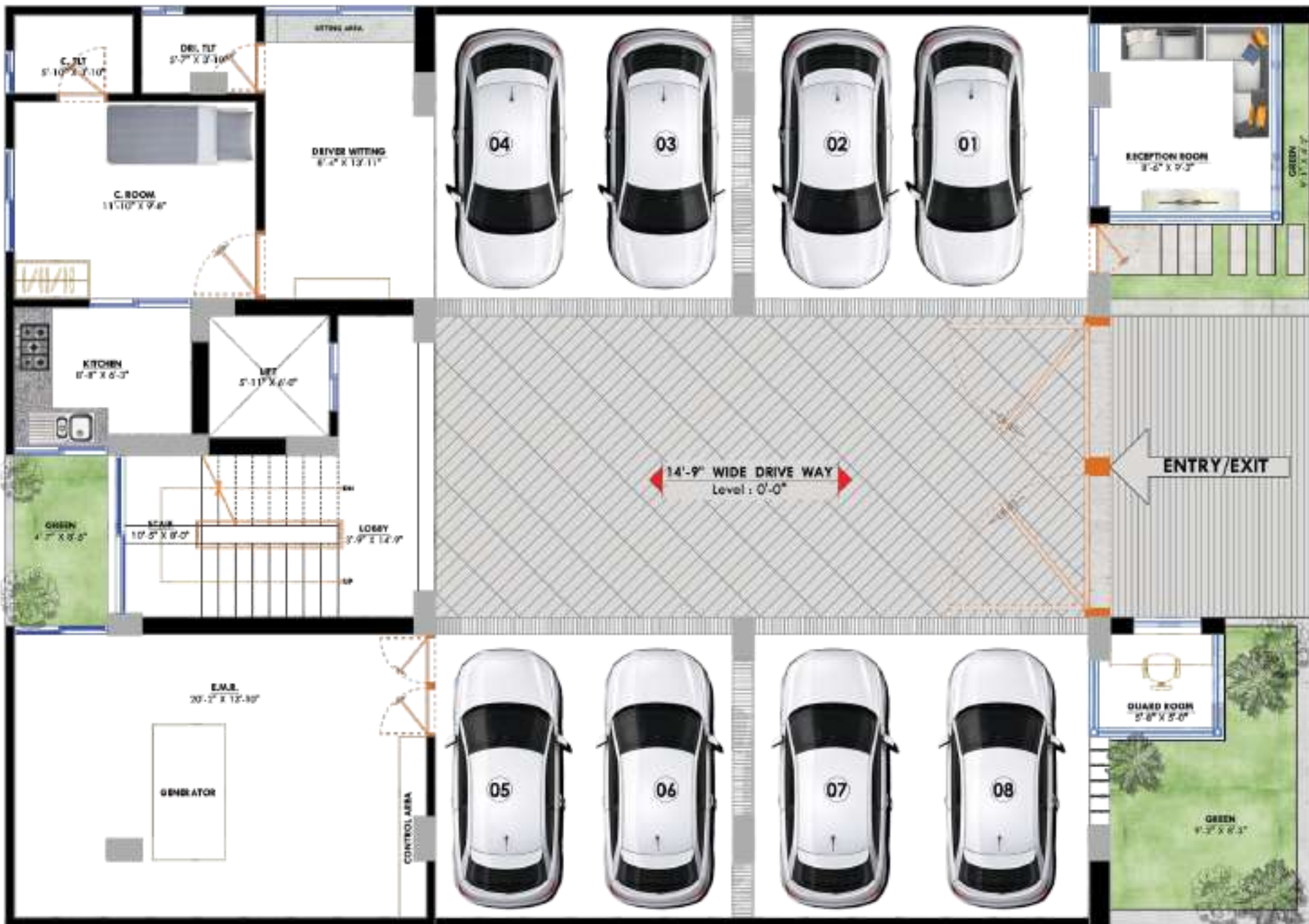
Bashundhara over the years has become a thriving neighborhood while retaining its suburban flavor with open space and lush greenery. The area is considered one of the well-developed, secured and prestigious areas in the city and is home to the upper stage of the society.

A highlight of living in the location is that it is very close to Gulshan and Banani thus giving access to the glittering life of those areas. From here you can easily commute to nearby areas like Progoti Shoroni, Nikunja, Uttara, Airport and so on. The presence of Kuril Flyover immensely smoothen your daily commute to other parts of the city.



## **ENTRANCE**

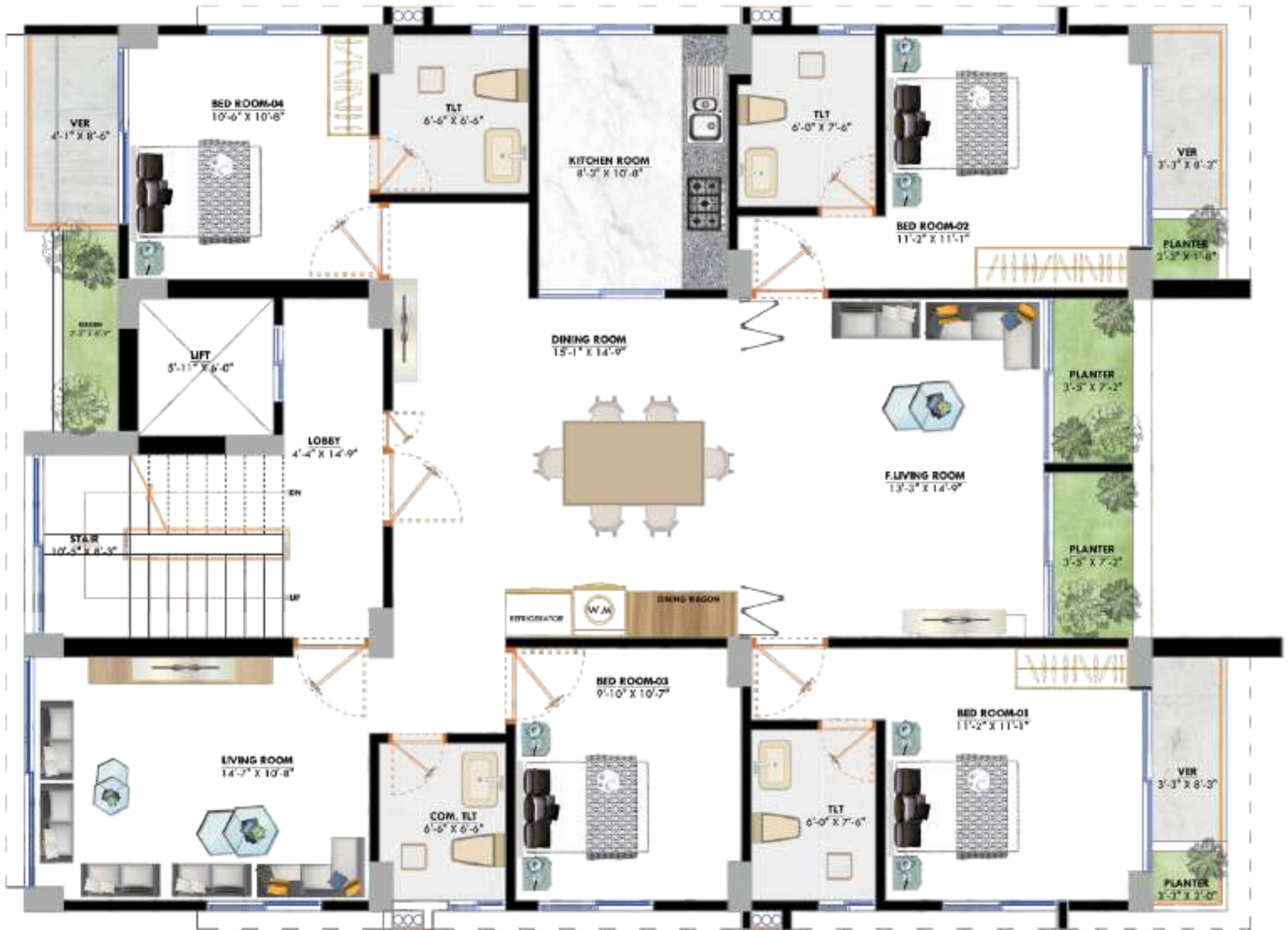
The beautifully landscaped entrance greeting you as soon as you enter the premises. The front elevation of the building has been perfected with the combination of dadding, groove, glass, and paint as per Architectural design .A concierge will be there for easy monitoring of the building round the dock.



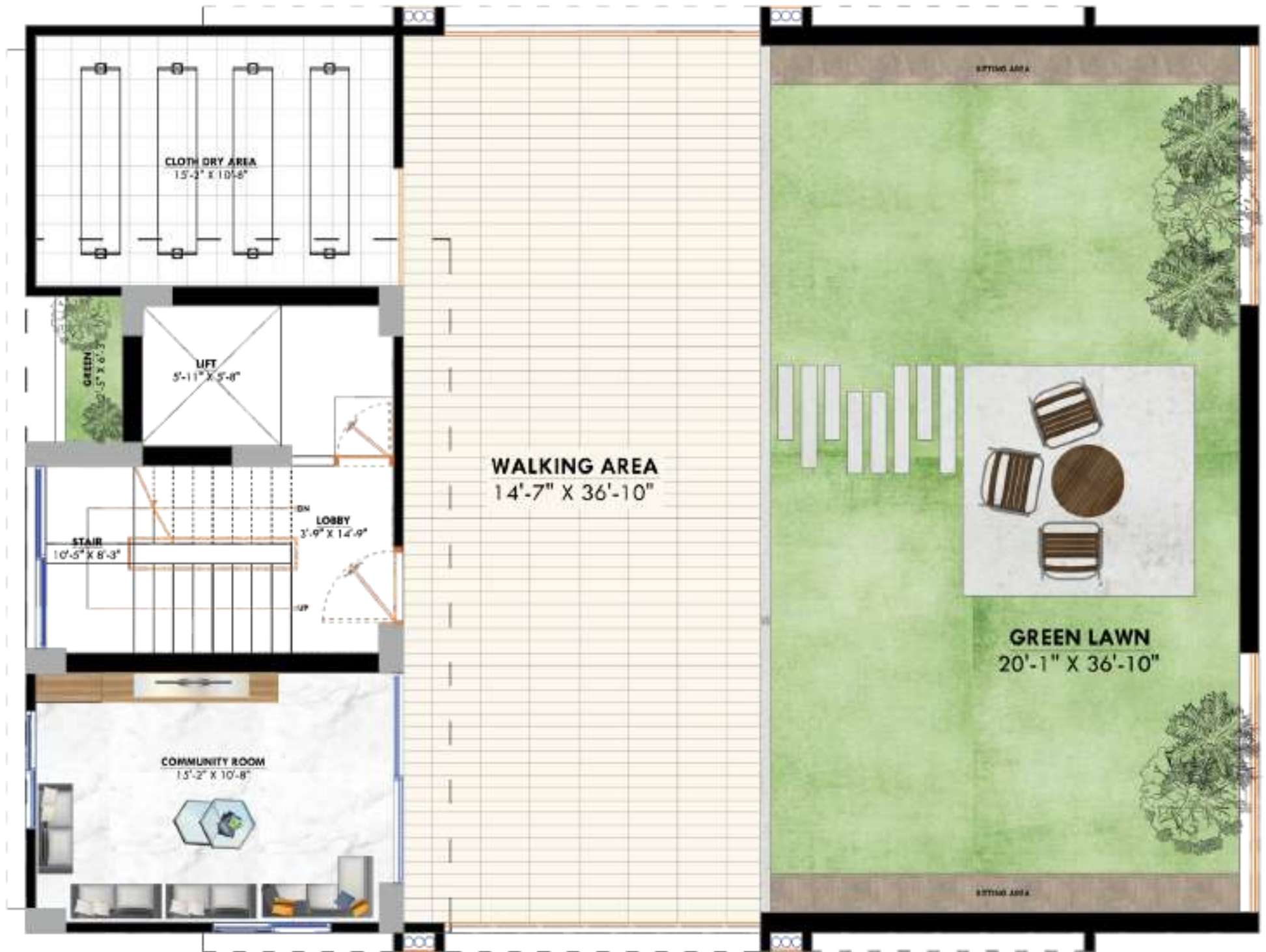
⊙ GROUND FLOOR PLAN



⊙ TYPICAL FLOOR PLAN



⊙ SINGLE UNIT FLOOR PLAN



⬅️ ROOF TOP PLAN





## **ROOF TOP** FEATURES

- Aesthetically landscaped rooftop with a mesmerizing green lawn.
- BBQ area with portable BBQ tray.
- Lime terracing of adequate thickness for protection from heat.
- Protective parapet wall up to 4' high around the periphery.
- Separated clothes drying area.



**C H E R R Y   O R C H A R D \_**



CHERRY  
ORCHARD

STATE-OF-THE-ART  
**APARTMENT**  
**FEATURES**

<b>A-GROUND FLOOR_</b>	
Ground floor level height	:Minimum 2.5ft height from the road level and 1st floor level 15.5ft.
Intercom connection	:From apartments to Ground floor.
<b>CCTV</b>	:CCTV monitoring in reception / security room / Guard room.
Guard room/Security room	:Located for easy monitoring of the gates and CCTV.
<b>B-EXTERIOR FACADE_</b>	:Master Coat if the building needs paint/Other finish as per design.
<b>C-CAR PARKING SPACE_</b>	:Ground Floor
<b>D-COMMON FACILITIES_</b>	:Landscaped rooftop and Ground floor.
<b>E. STAIRCASES &amp; LIFT LOBBIES_</b>	
no. of staircases	:1 (ONE)
Lift lobby materials	:As per Architect's design.
<b>F-LIFT_</b>	
No's of Lift	:01 (One), Each 08 Passenger Capacity Lift.
Brand	:Imported Chinese quality as per Developers Choice.
Lift Space	:Inverter, Adequate lighting, photocell sensor, emergency alarm.
Lift Design	:As per aesthetics of the lobbies.
<b>G-GENERATOR_</b>	
Generator	:One standby emergency Generator Ricardo or equivalent for operating in case of power failure.
<b>H-THE GENERATOR WILL SUPPORT BACK-UP ELECTRICITY SUPPLY AND WILL SERVE_</b>	
For the Project	:Lift , Water Pump, Lighting in all common spaces and stair lobbies.
For Each Apartment	:All Bedrooms, Dining & living rooms, 1 light, 1 fan
All Bathroom & Kitchen	:1 light
TV, Refrigerator	:1in each apartment
<b>I-SUB STATION (If required)_</b>	
Brand	:Brand–Power Mann / Energypac / Adex or good quality sub-station as per developer choice.
Transformer	:Rating as per requirement.
<b>J-MAIN APARTMENT FEATURES_</b>	
Walls Will be made by 1st class bricks / Machine made concrete Hollow Blocks as per developer choice.Floor Finish Churro / RAK / Akij / Monalisa or good quality as per Developer's Standard Mirror Polished Tiles will be used in bed rooms, family living, dining and Verandahs. Size 24 inch x 24 inch	

### **K-Doors\_**

Main entrance door frame & Shutter Solid Ctg. teak 3'-6"x7' main entrance door will have Door chain, Check viewer, door knocker, apartment name plate, door handle with handle lock. Internal Door frame All door frames will be of solid harden wood (Teak Chamble/Mahogany) (Except toilet door frame) Door Lock Cylindrical lock.

### **L-WINDOWS\_**

Sliding Doors & windows Sliding glass doors and windows used as per floor plan, complete with mohair lining, rainwater barrier, and flyproof netting provision. Brand - BTA/ Chung-Hua/KAI or good quality as per Developer's standard. Safety grills on windows. As per design.

### **M-INTERNAL PAINT\_**

Plastic Paint on walls and ceilings Berger or Elite or Asian or Aqua as per Developer's Standard. Grills will be coloured with Enamel paint.

### **N-BATHROOM FEATURES\_**

Floor tiles :Churro / RAK / Akij / Monalisa or good quality as per Customer's choice from the Developer's display.

Wall tiles up to full height  
Doors & Cat Doors

:Churro / RAK / Akij / Monalisa or good quality as per Customer's choice from the Developer's display.  
:PVC Door Frame with PVC Shutter

### **O-SANITARY WARES\_**

Local Combiclosets in all bathrooms

:Exclusive Sanitary Ware in all Bathrooms (Local) or good quality as per Customer's choice from the Developer's display.

Basin counter top in Master Bathroom  
Paedestal basin in other bathrooms

:RAK / Star Ceramic or good quality as per Developer's standard.  
:RAK/Star Ceramic or good quality as per Developer's standard.

Mirror over Basin in all Bathrooms  
Local chrome plated fittings in all

:Good quality as per Developer's standard.  
:Sattar or Equivalent as per Developer's standard.

Bathrooms Push Shower with combine bib cock  
Soap case, towel rail, toilet paper holder in all bathrooms

:All bathrooms  
:RAK / Star or Equivalent as per Developer's standard.

Concealed hot and cold water lines  
Lighting

:In Master bathroom & 2nd bathroom.  
:Adequate lighting as per designers choice.

### **P-KITCHEN FEATURES\_**

Floor tiles  
Wall tiles up to 7' (Seven) height

:Churro / RAK / Akij / Monalisa or good quality as per Customer's choice from the Developer's display.  
:Churro / RAK / Akij / Monalisa or good quality as per Customer's choice from the Developer's display.

Doors  
Bumer

:Strong and durable Veneer Flush door shutters with wooden frame.  
:Double Bumer gas outlet over concrete platform.

Counter top Single bowl SS sink  
Provision for kitchen hood

:One high polish stainless steel sink will be of good quality as per Developer's standard.  
:As per Design

Exhaust fan suitably located  
Provision for light point for energy saver light

:As per Design  
:As per Design

# ACTS ASSET LTD.

BUILDING YOUR DREAM ASSETS\_

Cherry Orchard is the place where innovative architecture meets fine craftsmanship and the use of state of the art technologies ensures the highest level of comfort and security. Each floor is outfitted with a hanging garden and balconies. The layouts are also very spacious and the stairway is well ventilated with lift lobbies. The parking space is spacious and is designed to cater to the needs of the residents and guests.

The application of modern architecture and utilities has given this exquisite abode a modern day mansion outlook that is truly inspiring. The terrace is very voluminous and is equipped with a beautiful swimming pool and modern designs that truly make this one of the most unique and contemporary residential building in the city.

our other PROJECTS



STORMY ORCHARD\_



ORCHARD SHADOWS\_



PEACH ORCHARD\_



ORCHARD SIGNATURE\_





CHERRY  
ORCHARD

**ON TIME DELIVERY  
QUALITY YOU EXPECT**



PLOT NO: 497, BLOCK NO: D,  
ROAD NO: 01, BASHUNDHARA R/A

 [mail@actsasset.com](mailto:mail@actsasset.com)  
 **+88 019 20 85 85 32**  
 [www.actsasset.com](http://www.actsasset.com)